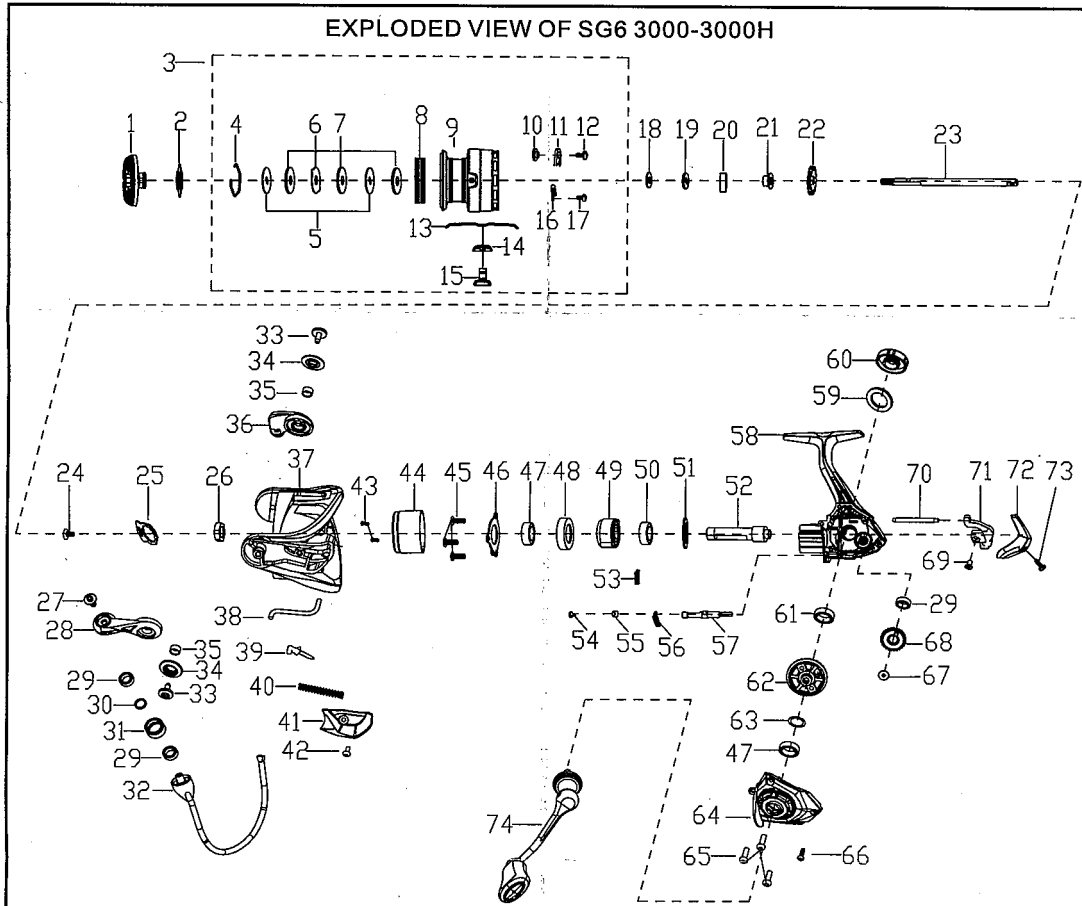


SAVAGE

GEAR *it's a savage world*



EXPLODED VIEW OF SG6 3000-3000H

ITEM	PARTS DESCRIPTION	ITEM	PARTS DESCRIPTION	ITEM	PARTS DESCRIPTION
1	Drag Knob Assembly	26	Rotor Nut	51	Washer
2	Drag Knob Seal	27	Line Roller Screw	52	Pinion
3	Spool Assembly	28	Bail Arm	53	Clutch Spring
4	Washer Retaining Ring	29	Bearing(2pcs)	54	Screw
5	Keyed Washer(2pcs)	30	Line Roller Bushing	55	Pom Bushing
6	Ear Washer	31	Line Roller	56	Clutch Switch Spring
7	Washer(3pcs)	32	Bail Assembly	57	Clutch Switch
8	Spool Band	33	Bail Arm Screw(2pcs)	58	Body Assembly
9	Spool	34	Screw Cap(2pcs)	59	Handle Cap Seal
10	Spool Click Spacer Ring	35	Bushing(2pcs)	60	Handle Cap
11	Spool Click Plate	36	Bail Holder	61	Bearing
12	Screw	37	Rotor	62	Driver Gear
13	Spring	38	Rotor Trip Lever	63	Washer
14	Line Clip Pad	39	Pivot Arm	64	Body Cover Assembly
15	Line Clip	40	Spring	65	Screw(3pcs)
16	Spring	41	Bail-Arm-Cover	66	Screw
17	Screw	42	Screw	67	Screw
18	Spool Adjust Washer	43	Screw(2pcs)	68	Oscillation Gear
19	Main Shaft Washer	44	Body Head Cover	69	Screw
20	Bearing	45	Screw(3pcs)	70	Slider Guide Shaft
21	Spool Holder	46	Ball Bearing Retainer	71	Slider
22	Click Gear	47	Bearing(2pcs NMB Bearing)	72	Body Rear Cover
23	Main Shaft	48	Bearing Holder	73	Screw
24	Screw	49	Clutch Assembly	74	Handle Assembly
25	Rotor Nut Set Plate	50	Bearing		

